



# Database Views in HP Web Jetadmin

## Table of contents

<b>Overview</b>	<b>3</b>
<b>Database Connectivity license</b>	<b>3</b>
<b>Database views</b>	<b>3</b>
<b>Data exports</b>	<b>3</b>
Accuracy of exported data	4
Select the data to be exported	5
Schedule the exports	5
Select the devices to be exported	5
Select the destination	6
Export the data to the database views	6
<b>Reports to database views</b>	<b>8</b>
<b>Use the database views</b>	<b>8</b>
<b>HP Eco Solutions reports</b>	<b>10</b>
Device settings and capabilities	11
Copy and digital send capabilities exception	11
Device paper usage and digital processing	11
Top 5 paper usage	12
<b>Summary</b>	<b>12</b>
<b>Appendix A—Configure the default poller</b>	<b>13</b>

<b>Appendix B—Data dictionaries for database views</b>	<b>15</b>
Media size and color usage utilization view (PUBLIC_MEDIA_COLOR_USE_VW)	15
Job type utilization view (PUBLIC_JOB_TYPE_USE_VW)	16
Consumables utilization view (PUBLIC_CONSUMABLES_USE_VW)	16
Consumables information view (PUBLIC_CONSUMABLES_INFO_VW)	16
Device attributes view (PUBLIC_DEV_INFO_VW)	18
Connection attributes view (PUBLIC_CONN_INFO_VW)	19
All attributes view (PUBLIC_DEV_CON_INFO_VW)	19
Group membership view (PUBLIC_DEVICE_GROUP_VW)	19
Media charge view (PUBLIC_MEDIA_CHARGE_VW)	19
<b>Appendix C—Naming schema</b>	<b>20</b>

## Overview

HP Web Jetadmin is a printer management solution that gathers information from devices and presents the data in a multitude of formats to meet customer needs. Information pertaining to device assets, consumables, and page counts can be displayed in device lists or reports. This same data can be stored in Microsoft® SQL database views if an optional Database Connectivity license is installed. Through database views, users can directly access exported device list or report data stored in a SQL database. This allows for building business intelligence reports, such as Crystal Reports, directly on the device data exposed by the HP Web Jetadmin database views. Administrators can use the exposed database views of the device data to extract, transform, and load (ETL) the data into an enterprise's data warehouse.

## Database Connectivity license

HP Web Jetadmin 10.2 SR6 and later automatically includes the ability to store data collections to SQL database views without the need for a license. Data that is collected for reports in HP Web Jetadmin is written to a database view on a scheduled basis. Either the HP Web Jetadmin background poller or the scheduled data collections for reports generates the data that is populated in these database views. However, user-defined exports of column data to database views still require a license for all versions of HP Web Jetadmin. The license can be obtained by submitting a request at the HP Inc. – Software Depot site for an [HP Web Jetadmin Database Views license](#). This license allows HP Web Jetadmin users to do the following:

- Export device lists and store data collections to SQL database views

The licenses are node-locked to an IP address. A separate license is needed for each HP Web Jetadmin server. A Connectivity Welcome Letter and an Instructions document is supplied when a license is requested from HP. These documents explain how to obtain and install a license.

## Database views

HP Web Jetadmin collects data from devices and stores the data in SQL database tables. Device lists display the data the user requires in columns that can be sorted or filtered. Device data can be exported to .csv or .xml files for viewing and manipulating in applications such as Microsoft Excel. Device data can be displayed in canned or custom reports that HP Web Jetadmin generates to meet user needs. In addition, this same data can be written to SQL database views and accessed by asset and reporting tools if the optional Database Connectivity license is installed. Data in the following areas can be written to the database views in HP Web Jetadmin:

- Data exports
- Reports data collections

## Data exports

Device data can be exported from any device list or device group by selecting the devices, right-clicking the selection, and selecting **Export**. The **Export Devices** wizard can also be launched from **Tools > Export devices**. Data exports can be scheduled to run at any interval. No matter which technique is used, the user can dictate the devices, data, and accuracy of the data that is written to a database view.

## Accuracy of exported data

When the **Export Devices** wizard is launched, a threshold level can be set to specify the accuracy of the data that is exported (Figure 1).

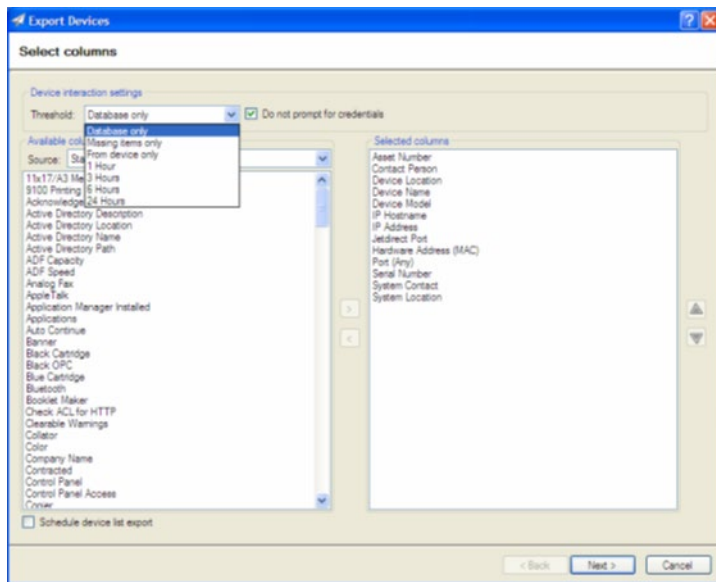


Figure 1 Select columns

The following threshold levels can be selected:

- **Database only:** Data is gathered only from the database and not from the device, no matter how old the data might be.
- **Missing items only:** Data is gathered from the database if the data exists. Otherwise, the data is gathered directly from the device.
- **From device only:** Data is gathered directly from the device regardless of whether data exists in the database, ensuring the most accurate data.
- **1 hour:** Data in the database older than 1 hour is updated directly from the device.
- **3 hours:** Data in the database older than 3 hours is updated directly from the device.
- **6 hours:** Data in the database older than 6 hours is updated directly from the device.
- **24 hours:** Data in the database older than 24 hours is updated directly from the device.

A default poller runs in the background and collects data from devices depending on a variety of factors, such as which devices and columns are displayed and how frequently the poller is configured to collect data. The more frequently data is collected from devices, the more accurate the data in the database. However, the drawback is increased network traffic when data is continuously collected from devices.

## Select the data to be exported

The **Selected columns** table is prepopulated with a default set of data elements when the wizard is launched from the **Tools** menu. If the wizard is launched by right-clicking selected devices, the columns that are present in the device view are preselected. The **Available columns** table consists of data elements that are still available. The number of items in the list can be adjusted by selecting one of the following options:

- **Favorites:** Displays the most commonly used columns.
- **All:** Displays all the available columns, except obsolete columns. To display only a specific category of columns, expand **All**, and then select the category.
- **Obsolete:** Displays columns that are still available in HP Web Jetadmin, but have been replaced by new columns or will not be supported in the future.

## Schedule the exports

A device list export can be scheduled to occur at a specific time and frequency by selecting the **Schedule device list export** checkbox on the **Select Columns** page ([Figure 1](#)). A flexible set of scheduler options are presented to launch a one-time or recurring **Export devices** process. Each schedule is given a schedule name for future editing of the time and frequency. Only the time and frequency of a scheduled export can be edited, not the devices or columns to be exported. If new devices or columns are required, a new scheduled export must be created.

## Select the devices to be exported

If the **Export Devices** wizard is launched from **Tools > Export devices**, the **Select Devices** page is displayed for selecting the devices that are included in the export. If the **Export Devices** wizard is launched by right-clicking and selecting **Export** from the device list, only the devices that are already selected in the device list are included in the export.

## Select the destination

After the columns and devices are selected, the destination for outputting the data can be selected (Figure 2).

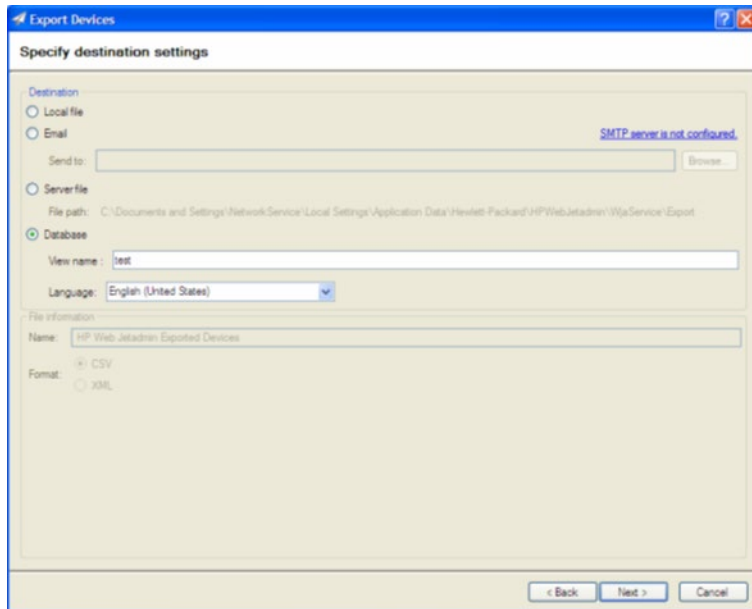


Figure 2 Specify destination settings

Selections include the following:

- **Local file:** Exports to a local file on the client PC. The user is prompted for a file name and location after the data is collected and is ready to be written.
- **Email:** Sends the data to an email address. Enter the email address on this page or browse for the correct email address. For the file format, select CSV or XML. The file is added to the email as an attachment.
- **Server file:** Exports the device list to a specific file name and path on the HP Web Jetadmin server. The location cannot be edited. If a file of the same name already exists in the location, a timestamp is added to the name of the export file.
- **Database:** Stores the data in a SQL database view.

## Export the data to the database views

If **Database** is selected as the export destination, HP Web Jetadmin prompts for a database view name. After the name is entered, a view is created in the SQL database that contains the data for all the devices and columns selected for the export. Using Microsoft SQL Server Management Studio Express, log in to the HP Web Jetadmin instance, open the **Views** folder, right-click the view name that was entered in HP Web Jetadmin (the name is preceded by dbo), and select **Open View** to see the data that is stored for each device and column that was selected for the export (Figure 3).

Enterprise tools, such as Crystal Reports, can be easily instructed to open this view and retrieve the contents for displaying a custom report.

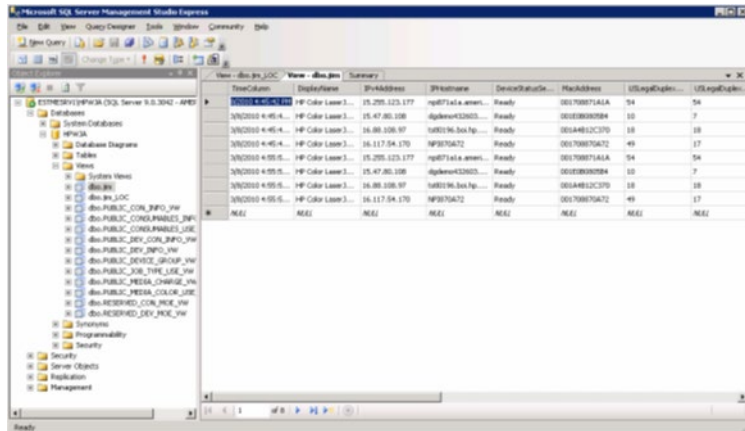


Figure 3 Database view in SQL Studio Express

If the data export is scheduled to occur at a regular frequency, a date/time column is automatically stored in the view to dictate when the data was exported. However, if an exported device list contains new columns or deleted columns and the server attempts to use the same database view name, HP Web Jetadmin recognizes that the columns in the view no longer match and forces a new name to be used for the view. If the same view name is required—but with different columns—the database table and matching view can be edited by using SQL Studio Express to match the columns that HP Web Jetadmin is attempting to export.

Column headers in a data export use programmatic names vs. the friendly names that are displayed in the HP Web Jetadmin user interface. A matching view name in Studio Express with `_LOC` appended to the view name contains a schema or mapping to match the display names to the programmatic names (Figure 4). For a complete list, see [Appendix C—Naming schema](#) on page 20.

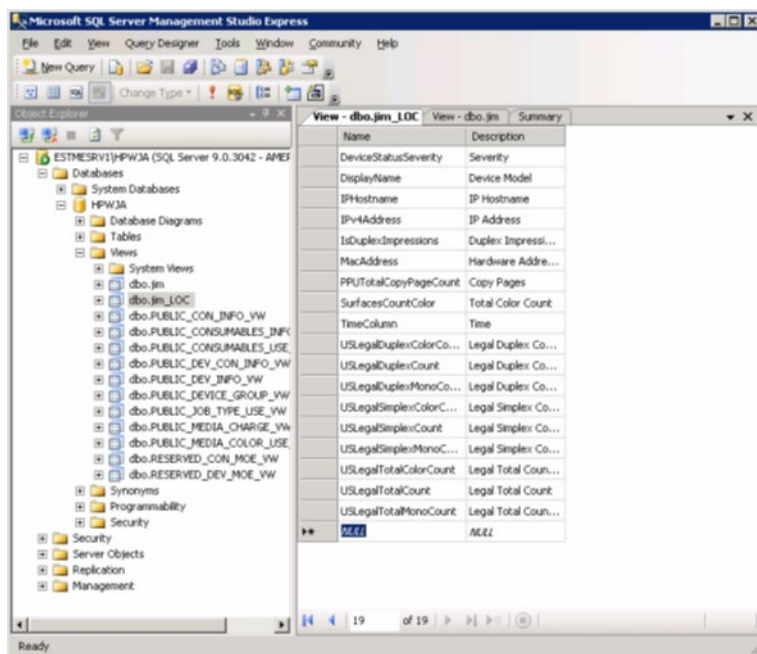


Figure 4 Programmatic names vs. display names

## Reports to database views

Data that is collected for reports in HP Web Jetadmin can be written to a database view on a scheduled basis. There are several canned reports stored in SQL database views after the optional database connection module license is installed. Either the HP Web Jetadmin background poller or the scheduled data collections generates the data that is populated in these reports.

The HP Web Jetadmin device list background poller is responsible for collecting the data that represents device attributes. A configuration file is available to turn attributes on or off that are collected by the background poller. For the location of the file and the attributes that are collected, see [Appendix A—Configure the default poller](#) on page 13.

Reports data collections can be enabled to collect the remaining data, typically the data that represents page counts and consumables usage. Reports data collections are run once per day.

HP Web Jetadmin offers several types of data collections for reports. However, only the following data collections are responsible for gathering data to be stored in database views:

- **Device Utilization Data**—Collected daily, this data contains page counts, such as simplex, duplex, monochrome, color, media size (such as Letter legal, and A4), and job type (such as copy, digital send, incoming fax, outgoing fax, and scan).
- **Supply Utilization**—Collected daily, this data contains metrics on consumable usage, such as level value, percent remaining, supply coverage, pages remaining, and current page count. Additional data, if supported, might include installation date, removal date, initial level, initial page count, product information (such as serial number, part number, maximum capacity, maximum pages, and manufacturing date) and consumable type (such as toner, fuser kit, and ink).

## Use the database views

After data resides in the database views, SQL Server Studio Express can be used to browse the contents of each view ([Figure 5](#)). Simply log in to the HPWJA SQL instance and navigate to the **Databases > HPWJA > Views** folder. Any views created by using the export feature of HP Web Jetadmin are displayed by the name that was provided for the view during the export. Right-clicking a view and selecting **Open View** displays the contents of that view. Each column that was set to be included in the export is displayed with a programmatic name as the column header.



For a schema to match programmatic names to names as they are displayed in the HP Web Jetadmin user interface, see [Appendix C–Naming schema](#) on page 20.

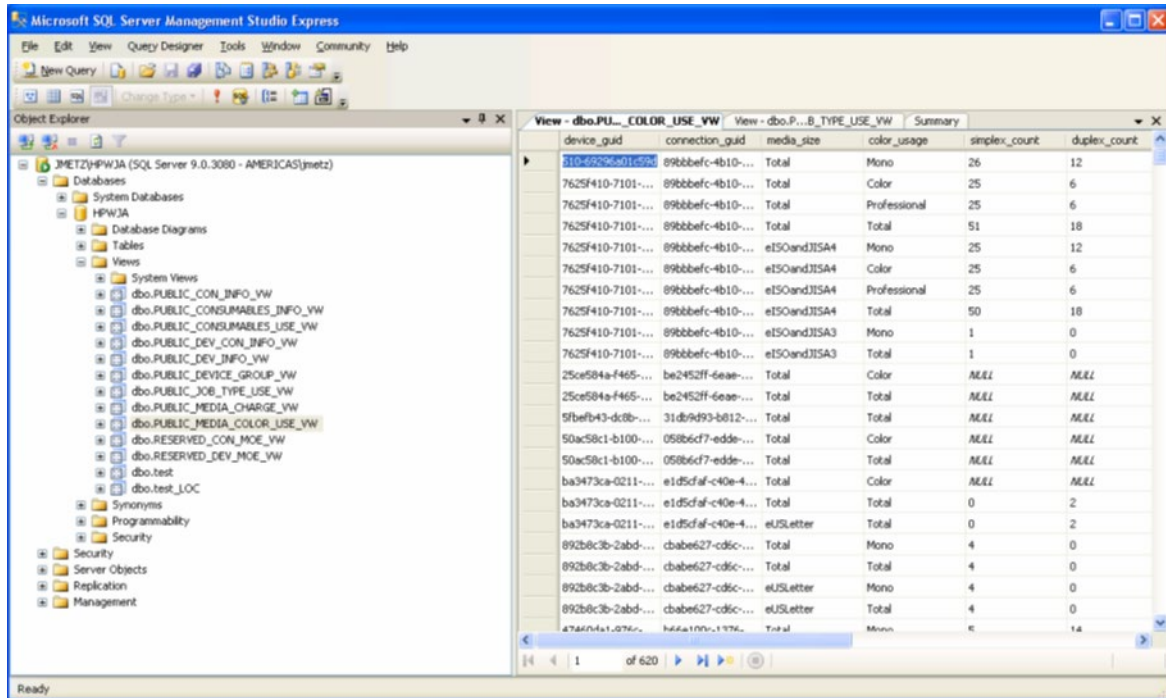


Figure 5 SQL Studio Express database views

The following database views also appear in the list of views as a result of data being collected either by the background poller or, optionally, reports data collections. For more information, see [Appendix B–Data dictionaries for database views](#) on page 15.

- PUBLIC\_CON\_INFO
- PUBLIC\_CONSUMABLES\_INFO–Requires Supplies Utilization data collections
- PUBLIC\_CONSUMABLES\_USE–Requires Supplies Utilization data collections
- PUBLIC\_DEV\_CON\_INFO
- PUBLIC\_DEV\_INFO
- PUBLIC\_DEVICE\_GROUP\_PUBLIC\_JOB\_TYPE\_USE–Requires Data Utilization data collections
- PUBLIC\_MEDIA\_CHARGE–Requires Data Utilization data collections
- PUBLIC\_MEDIA\_COLOR\_USE–Requires Data Utilization data collections

Business intelligence reports, such as Crystal Reports, can be built directly on the data exposed by the database views. A System DSN connection to the HP Web Jetadmin database (HPWJA) can be created under Data Sources (ODBC).

Crystal Reports can then link to the appropriate HP Web Jetadmin database (HPWJA), allowing users to select available columns contained within the view using the Standard Report Creation Wizard (Figure 6).

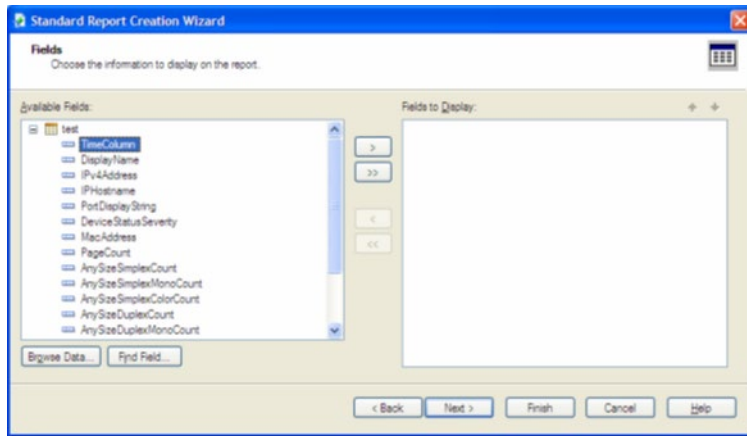


Figure 6 Selecting DB View columns

A variety of custom reports can be created in a multitude of formats based on the data stored in the database views (Figure 7).



**Report Description:**

**1/17/2010**

DisplayName	AnySizeTotalCount	AnySizeTotalMonoCount	AnySizeTotalColorCount
HP Color LaserJet 4730 MFP	4,366.00	749.00	3,617.00
HP Color LaserJet 4730 MFP	10.00	10.00	0.00
HP Color LaserJet CM4730 MFP	8,240.70	1,874.20	6,366.50
HP Color LaserJet CM6040 MFP	7,892.20	959.70	6,932.50
HP LaserJet M3035 MFP	1,225.00	1,225.00	<Not supported>

Figure 7 Report using Crystal Reports

## HP Eco Solutions reports

HP Eco Solutions reports are preconfigured SAP Crystal Reports 2008 that display the environmental settings for a print fleet. These reports pull information contained in the database views described in previous sections. They are included in a .zip file with the Database Connectivity Module. HP Eco Solutions reports provide an intuitive presentation of environmentally relevant data from HP Web Jetadmin, allowing IT managers to quickly assess opportunities to reduce the environmental impact of their organization's printing and track progress toward green IT goals over time.

The four HP Eco Solutions reports include the following detailed information.

## Device settings and capabilities

Reports the availability of paper-saving features as well as the availability and use of energy-saving features.

- Device count—Quantity of devices that HP Web Jetadmin can detect.
- Duplex-capable devices—Percentage of all reported devices with the automatic duplex feature installed listed by individual device status. This shows your total opportunity to drive paper savings via duplexing.
- Powersave-capable devices—Devices that have the Powersave capability. Highlights your potential to further decrease energy consumption.
- Powersave-enabled devices—Percentage of devices with the Powersave capability that have the Powersave features enabled listed by individual device status. Shows the untapped potential to decrease energy consumption by enabling Powersave on capable devices.
- Average time to sleep—Average of the time-to-sleep settings across a selected group in minutes. Shorter time-to-sleep settings reduce the energy consumed by moving devices out of higher energy states, such as Ready mode.

## Copy and digital send capabilities exception

Reports devices without the copy or digital send capability. The addition of digital send capability enables digital—rather than paper-based—information management, reducing paper consumption. This report can assist in uncovering alternatives to paper-based processes. Using digital, green alternatives to printing or copying and sharing documents can help speed processes and decrease paper consumption.

- Device count—Quantity of devices that HP Web Jetadmin can detect.
- Copy-capable devices—Devices with the copy capability. These devices can also scan to locally connected devices.
- Digital send-capable devices—Devices capable of scanning to a file and digital sending.

## Device paper usage and digital processing

Reports device use, showing both paper-based and digital information management. This allows comparison of simplex and duplex printing, as well as the use of the digital send capability rather than copy.

- Total count—Paper throughput in sheets.
- Simplex sheets—Number of single-sided prints.
- Duplex sheets—Number of sheets of paper printed in duplex (double-sided) mode, including the sheets printed on one side while the device is in duplex mode.
- Simplex versus duplex—Percentages of one-sided and two-sided printing. A higher percentage of simplex pages indicates the potential to save paper with duplex printing.

- Copy impressions—Number of impressions processed in copy mode. Each impression counts once, regardless of whether it is copied to a single-sided or double-sided copy.
- Digital send impressions—Number of impressions processed in digital send mode.
- Copy versus digital send—Percentage of copy count and digital sends presented as a graph. The higher the copy percentage, the greater the potential to save paper and reduce waste by moving to digital processes.
- Paper usage (sheets)/total impressions—Ratio indicating how much information (impressions) is managed with paper. The lower the ratio, the more efficiently the device is being used (for example, less paper is used to transfer information).

## Top 5 paper usage

Reports the printers with the greatest paper usage among selected groups, enabling prioritized follow up.

- Simplex count—Number of single-sided prints.
- Duplex count—Number of sheets of paper printed in duplex (double-sided) mode, including the sheets printed on one side while the device is in duplex mode.
- Total count—Paper throughput in sheets.
- Copy impressions—Number of impressions processed in copy mode. Each impression counts once, regardless of whether it is copied to a single-sided or double-sided copy.

For more information about HP Eco Solutions reports, download the *HP Eco Solutions with HP Web Jetadmin* white paper. For instructions on generating HP Eco Solutions reports, download the *HP Web Jetadmin Installation and Setup Guide*. Both of these documents are available on the HP Web Jetadmin [support page](#).

## Summary

The optional Database Connectivity Module provides a license that can be installed in HP Web Jetadmin to enable administrators to do the following:

- Use a remote SQL database in place of a local SQL Express database.
- Export device lists and store data collections to SQL database views.
- Generate HP Eco Solutions reports to quickly assess opportunities to reduce the environmental impact of their organization's printing and track progress toward green IT goals over time.

Through database views, users can directly access exported device list or report data stored in a SQL database from enterprise tools. This allows for building business intelligence reports, such as Crystal Reports, directly on the device data exposed by HP Web Jetadmin database views. Administrators can use the exposed database views of the device data to extract, transform, and load (ETL) the data into an enterprise's data warehouse.

## Appendix A—Configure the default poller

The HP Web Jetadmin service automatically adds the following attributes to the background poller in cases where the Database Connectivity Module license is installed. Users can choose to stop polling for any of these attributes through a configuration file named `ReportsDataViewPoller.config.xml` found in the `C:\Windows\ServiceProfiles\NetworkService\AppData\Local\HP Inc\HPWebJetadmin\WjaService\config` directory.

For each attribute in this file, a value of `true` indicates that daily polling occurs and a value of `false` indicates that no polling occurs for that attribute. See a `ReportsDataViewPoller.config.xml` example below.

```
<ipmc:configuration xmlns:ipmc="www.hp.com/schemas/imaging/ipmc/config/2004/02/24">
  <property name="DuFirstCollected.PollingEnabledOnStartup">
    <type>HP.Imaging.Wjp.Sdk.Core.Framework.ConfigurationItemString</type>
    <value>true</value>
  </property>
  <property name="PageCount.PollingEnabledOnStartup">
    <type>HP.Imaging.Wjp.Sdk.Core.Framework.ConfigurationItemString</type>
    <value>true</value>
  </property>
  <property name="Economode.PollingEnabledOnStartup">
    <type>HP.Imaging.Wjp.Sdk.Core.Framework.ConfigurationItemString</type>
    <value>true</value>
  </property>
  <property name="DeviceLocation.PollingEnabledOnStartup">
    <type>HP.Imaging.Wjp.Sdk.Core.Framework.ConfigurationItemString</type>
    <value>true</value>
  </property>
  <property name="ContactPerson.PollingEnabledOnStartup">
    <type>HP.Imaging.Wjp.Sdk.Core.Framework.ConfigurationItemString</type>
    <value>true</value>
  </property>
  <property name="MacAddress.PollingEnabledOnStartup">
    <type>HP.Imaging.Wjp.Sdk.Core.Framework.ConfigurationItemString</type>
    <value>true</value>
  </property>
  <property name="PowersaveSeconds.PollingEnabledOnStartup">
    <type>HP.Imaging.Wjp.Sdk.Core.Framework.ConfigurationItemString</type>
    <value>true</value>
  </property>
  <property name="DuplexBinding.PollingEnabledOnStartup">
    <type>HP.Imaging.Wjp.Sdk.Core.Framework.ConfigurationItemString</type>
    <value>true</value>
  </property>
  <property name="PortNumber.PollingEnabledOnStartup">
    <type>HP.Imaging.Wjp.Sdk.Core.Framework.ConfigurationItemString</type>
    <value>true</value>
  </property>
  <property name="FirmwareRev.PollingEnabledOnStartup">
    <type>HP.Imaging.Wjp.Sdk.Core.Framework.ConfigurationItemString</type>
    <value>true</value>
  </property>
  <property name="SystemLocation.PollingEnabledOnStartup">
    <type>HP.Imaging.Wjp.Sdk.Core.Framework.ConfigurationItemString</type>
    <value>true</value>
  </property>
  <property name="NicModelName.PollingEnabledOnStartup">
    <type>HP.Imaging.Wjp.Sdk.Core.Framework.ConfigurationItemString</type>
    <value>true</value>
  </property>
  <property name="Ipv4Address.PollingEnabledOnStartup">
    <type>HP.Imaging.Wjp.Sdk.Core.Framework.ConfigurationItemString</type>
    <value>true</value>
  </property>
</ipmc:configuration>
```

```
</property>
<property name="SystemContact.PollingEnabledOnStartup">
  <type>HP.Imaging.Wjp.Sdk.Core.Framework.ConfigurationItemString</type>
  <value>>true</value>
</property>
<property name="HasDuplex.PollingEnabledOnStartup">
  <type>HP.Imaging.Wjp.Sdk.Core.Framework.ConfigurationItemString</type>
  <value>>true</value>
</property>
<property name="SerialNumber.PollingEnabledOnStartup">
  <type>HP.Imaging.Wjp.Sdk.Core.Framework.ConfigurationItemString</type>
  <value>>true</value>
</property>
<property name="DeviceStatusSeverity.PollingEnabledOnStartup">
  <type>HP.Imaging.Wjp.Sdk.Core.Framework.ConfigurationItemString</type>
  <value>>true</value>
</property>
<property name="ModelName.PollingEnabledOnStartup">
  <type>HP.Imaging.Wjp.Sdk.Core.Framework.ConfigurationItemString</type>
  <value>>true</value>
</property>
<property name="DuEnabled.PollingEnabledOnStartup">
  <type>HP.Imaging.Wjp.Sdk.Core.Framework.ConfigurationItemString</type>
  <value>>true</value>
</property>
<property name="DisplayName.PollingEnabledOnStartup">
  <type>HP.Imaging.Wjp.Sdk.Core.Framework.ConfigurationItemString</type>
  <value>>true</value>
</property>
<property name="DeviceStatus.PollingEnabledOnStartup">
  <type>HP.Imaging.Wjp.Sdk.Core.Framework.ConfigurationItemString</type>
  <value>>true</value>
</property>
<property name="IpHostname.PollingEnabledOnStartup">
  <type>HP.Imaging.Wjp.Sdk.Core.Framework.ConfigurationItemString</type>
  <value>>true</value>
</property>
<property name="DuLastCollected.PollingEnabledOnStartup">
  <type>HP.Imaging.Wjp.Sdk.Core.Framework.ConfigurationItemString</type>
  <value>>true</value>
</property>
<property name="AssetNumber.PollingEnabledOnStartup">
  <type>HP.Imaging.Wjp.Sdk.Core.Framework.ConfigurationItemString</type>
  <value>>true</value>
</property>
<property name="DeviceName.PollingEnabledOnStartup">
  <type>HP.Imaging.Wjp.Sdk.Core.Framework.ConfigurationItemString</type>
  <value>>true</value>
</property>
<property name="NicVersion.PollingEnabledOnStartup">
  <type>HP.Imaging.Wjp.Sdk.Core.Framework.ConfigurationItemString</type>
  <value>>true</value>
</property>
<property name="DiscoveryTime.PollingEnabledOnStartup">
  <type>HP.Imaging.Wjp.Sdk.Core.Framework.ConfigurationItemString</type>
  <value>>true</value>
</property>
</ipmc:configuration>
```

## Appendix B—Data dictionaries for database views

The following tables include all the attributes contained in each database view that is generated by either reports data collections for Device Utilization and Supplies Utilization or by the attributes polled in the configuration file described in [Appendix A—Configure the default poller](#) on page 13.

### Media size and color usage utilization view (PUBLIC\_MEDIA\_COLOR\_USE\_VW)

Attribute name	Data type	Description
device_guid	varchar(36)	A GUID that serves as a unique identifier for the device.
connection_guid	varchar(36)	A GUID that serves as a unique identifier for a communication interface.
media_size	varchar(64)	A string representation of the media size that is associated with the page counts. A value of "Total" indicates that the page count column values represent the total page counts for all media sizes. See below <sup>1</sup> for the list of valid values.
color_usage	varchar(64)	Describes whether or not these were monochrome pages or color pages and, if color, what type of color was used. Possible values are: "Mono", "Color", "GeneralOffice", "GeneralOfficeAccent", "Professional", "ProfessionalAccent", or "Total".
simplex_count	int	The number of single-sided sheets of pages printed by the printer. <sup>2</sup>
duplex_count	int	The number of sheets of paper printed with an impression on both sides of the sheet. <sup>2</sup>
dimplex_count	int	The number of blank sides of paper printed as the final page of a duplex job that contains an odd number of pages. <sup>2</sup> If a duplex job has an odd number of pages, the last page of the job is a sheet of paper with only one impression on it (the other side is blank).
total_count	int	The total number of page impressions printed (simplex_count + 2 times the duplex_count). <sup>2</sup>
total_equivalent_pages	float	The total area equivalent impressions printed. <sup>2</sup> For Imperial page sizes, this is the equivalent to the same area of letter pages printed. For metric page sizes, this is the equivalent to the same area of A4 pages printed.
scheduled_collection_time	datetime	The time (based on server time) when the data collection was scheduled to be started for the set of devices that includes this device. If data is being collected on a large number of devices, then this time could be substantially different from the actual time of data collection for this specific device.
attributed_collection_time	datetime	The time (based on server time) that this collection's data was attributed to. Generally, usage data is attributed to the previous day since that is when the usage likely occurred.

<sup>1</sup> Valid values for media\_size column: "Total", "Other", "eUSExecutive", "eUSLetter", "eUSLegal", "eUSEDP", "eEuropeanEDP", "eUSGovernmentLetter", "eUSGovernmentLegal", "eFolio", "eFoolscap", "eLedger", "eCSize", "eDSize", "eESize", "eStatement", "eSuperB", "eROC16K", "eJISExecutive", "eROC8K", "eISOandJISA10", "eISOandJISA9", "eISOandJISA8", "eISOandJISA7", "eISOandJISA6", "eISOandJISA5", "eISOandJISA4", "eISOandJISA3", "eISOandJISA2", "eISOandJISA1", "eISOandJISA0", "eISOandJIS2A0", "eISOandJIS4A0", "ePRC8K270X390", "eROC16K195X270", "ePRC8K260x368", "eISORA4", "eISOSRA4", "eISOSRA3", "eISORA3", "eJISB10", "eJISB9", "eJISB8", "eJISB7", "eJISB6", "eJISB5", "eJISB4", "eJISB3", "eJISB2", "eJISB1", "eJISB0", "eISOB10", "eISOB9", "eISOB8", "eISOB7", "eISOB6", "eISOB5", "eISOB4", "eISOB3", "eISOB2", "eISOB1", "eISOB0", "eJapanesePostcardSingle", "eJapanesePostcardDouble", "eISOA6Postcard", "eIndexCard4x6", "eIndexCard5x8", "ePhoto4x6", "eJapanesePostcardWithTab", "eIndexCard3x5", "eMonarch", "eCommercial10", "eCatalog", "eNo10Envelope", "eROC16K184X260", "eInternationalDL", "eInternationalC5", "eInternationalC6", "eInternationalC4", "eInternationalB5", "eCustom", "eCustomCard", "eUSEnvelopeA2", "eJapaneseEnvLong3", "eJapaneseEnvLong4", "eJapaneseEnv2", "ePhoto10x15", "ePhotoCabinet", "eTabloidExtra", "ePhotoLSizeCard", "eIndexCard5x7", "ePhotoESizeCard", "ePhotoKGSsizeCard", "ePhoto2ESizeCard", "ePhoto2LSizeCard", "eUSExecutiveR", "eUSLetterR", "eROC16KR", "eISOandJISA6R", "eISOandJISA5R", "eISOandJISA4R", "eJISBR6R", "eJISB5R", "eStatementR", "eAnyCustomSize", "eAnySize", "eCustomRoll", "eUnknownMediaSize", "eStatementWR", "eJISB5WR", "eISOandJISA4WR", "eISOandJISA5WR", "eUSLetterWR", "eJISB4W", "eJISB5W", "eISOandJISA3W", "eISOandJISA4W", "eISOandJISA5W", "eStatementW", "eLedgerW", "eUSLetterW".

<sup>2</sup> All pages printed, including copied pages and incoming fax pages.

**NOTE:** The page count attributes in this table might contain negative page counts. This usually happens when a device has been reset in such a way that the device's page count counters have also been reset.

## Job type utilization view (PUBLIC\_JOB\_TYPE\_USE\_VW)

Attribute name	Data type	Description
device_guid	varchar(36)	A GUID that serves as a unique identifier for the device.
connection_guid	varchar(36)	A GUID that serves as a unique identifier for a communication interface.
copy_count	int	The total number of pages printed during copy operations.
digital_send_count	int	The number of pages scanned for digital send operations.
incoming_fax_count	int	The number of pages printed during incoming fax operations.
outgoing_fax_count	int	The number of pages in outgoing fax operations.
scan_count	int	The total number of pages scanned regardless of the operation.
scheduled_collection_time	datetime	The time (based on server time) when the data collection was scheduled to be started for the set of devices that includes this device. If data is being collected on a large number of devices, then this time could be substantially different from the actual time of data collection for this specific device.
attributed_collection_time	datetime	The time (based on server time) that this collection's data was attributed to. Generally, usage data is attributed to the previous day since that is when the usage likely occurred.

**NOTE:** The page count attributes in this table might contain negative page counts. This usually happens when a device has been reset in such a way that the device's page count counters have also been reset.

## Consumables utilization view (PUBLIC\_CONSUMABLES\_USE\_VW)

Attribute name	Data type	Description
device_guid	varchar(36)	A GUID that serves as a unique identifier for the device.
connection_guid	varchar(36)	A GUID that serves as a unique identifier for a communication interface.
consumable_info_id	int	An integer that identifies the entry in the PUBLIC_CONSUMABLES_INFO_VW view that contains the information about this consumable for this device.
collection_time	datetime	The time (based on server time) when the consumables data was collected.
level_value	int	The estimated level of the consumable in the same units as the maximum_capacity attribute of the PUBLIC_CONSUMABLES_INFO_VW view. This attribute might also contain negative values that have the following meanings: level value empty (-1), level value low (-2), level value unknown (-3), level value out (-4), level value failure (-5), level value OK (-6).
percent_remaining	int	The estimated percentage of the consumable remaining. This attribute might also contain negative values that have the following meanings: level value empty (-1), level value low (-2), level value unknown (-3), level value out (-4), level value failure (-5), level value OK (-6).
supply_coverage	decimal(5,2)	The estimated percent average coverage of the consumable per page.
pages_remaining	int	The estimated number of pages remaining before the consumable must be replaced.
current_page_count	int	The number of page impressions that have been printed using this consumable while it has been in this device.

## Consumables information view (PUBLIC\_CONSUMABLES\_INFO\_VW)

Attribute name	Data type	Description
device_guid	varchar(36)	A GUID that serves as a unique identifier for the device.
connection_guid	varchar(36)	A GUID that serves as a unique identifier for a communication interface.



Attribute name	Data type	Description
consumable_info_id	int	A unique integer that identifies a row view that can be used to identify the consumables information for an entry in the PUBLIC_CONSUMABLES_USE_VW view.
install_date	datetime	The date that the consumable was installed in the device.
removal_date	datetime	The date that the consumable was removed from the device.
initial_level	int	The initial estimated level, as a percentage, of the consumable when it was first recognized (when it was first added to a data collection). This attribute might also contain negative values that have the following meanings: level value empty (-1), level value low (-2), level value unknown (-3), level value out (-4), level value failure (-5), level value OK (-6).
initial_page_count	int	The initial device page count when the consumable was first recognized (when it was first added to a data collection).
supply_status	varchar(10)	The authenticity of the consumable. Displays "genuinehp" for a genuine HP consumable, "refill" for a refilled consumable, and "unknown" if the authenticity cannot be determined.
active_state	varchar(15)	Describes whether the data is historical data for a consumable that is no longer in use or for one that is still being used in a device. Either "Active" or "Removed".
maximum_capacity	int	The estimated maximum capacity of this consumable. Units might vary by consumable, but are usually page impression counts.
maximum_pages	int	The estimated maximum number of page impressions that can be printed by this consumable.
part_number	varchar(50)	The part number of the consumable for a 110 volt device (see second_part_number for a 220 volt device).
serial_number	varchar(50)	The serial number of the consumable.
description	varchar(100)	A description of the consumable.
manufacturing_date	datetime	The date that the consumable was manufactured.
oem_name	varchar(50)	The manufacturer of the consumable, when available. Usually this is either "HP" or blank.
second_part_number	varchar(50)	The part number of the consumable for a 220 volt device (see part_number for a 110 volt device).
type_name	varchar(128)	A descriptive name of the type of the consumable.
type_string	varchar(50)	A tokenized string that represents the type of the consumable. Generally, this is a more generic name than the value in the type_name attribute.
color	varchar(50)	If the consumable can have a color associated with it (for example, a toner cartridge), then this attribute contains the color associated with the consumable.

## Device attributes view (PUBLIC\_DEV\_INFO\_VW)

Attribute name	Data type	Description
device_guid	string	A GUID that serves as a unique identifier for the device.
asset_number	string	The asset number reported by the device. This can be set in the UI on the device configuration tab under <b>My Settings\Asset Number</b> .
contact_person	string	The contact person reported by the device. This can be set in the UI on the device configuration tab under <b>Device\Contact Person</b> .
economode	string	The device's economode setting. Either "ON", "OFF", or "NULL" if unknown.
firmware_rev	string	The firmware revision reported by the device.
device_location	string	The device location reported by the device. This can be set in the UI on the device configuration tab under <b>My Settings\Device Location</b> .
device_name	string	The device name reported by the device. This can be set in the UI on the device configuration tab under <b>Device\Device Name</b> .
device_status	string	The status of the most recent device utilization data collection attempt for the device. Either "NULL" (no attempt was made), "STATUS_SUCCESS", "STATUS_FAILURE", or "STATUS_COMMEROR".
device_status_severity	string	The severity level of the status of the device. Either "SEVERITY_GREEN" (ready), "SEVERITY_YELLOW" (warning), or "SEVERITY_RED" (error).
display_name	string	The name of the device formatted for display.
du_enabled	int	Status of device utilization data collection. "1" if enabled for the device, otherwise "0".
du_first_collected	datetime	The date and time of the first device utilization data collection on the device.
du_last_collected	datetime	The date and time of the most recent device utilization data collection on the device.
duplex_binding	string	The status of duplexing. "Simplex" indicates that duplexing is turned off by default. "LongEdge" or "ShortEdge" indicates that duplexing is turned on by default. "NULL" indicates that the duplex setting is not known.
has_duplex	int	Indicates whether the device has a duplexer. "1" if positive, otherwise "0".
has_powersave	int	Indicates whether the device has Powersave capability. "1" if positive, otherwise "0".
page_count	int	The lifetime total pages for the printer engine as reported by the device.
powersave_seconds	int	The number of idle seconds before the printer goes into Powersave mode. "0" indicates that Powersave is disabled, "NULL" indicates the setting is unknown.
model_name	string	The model name as reported by the device.
serial_number	string	The serial number of the device.
system_contact	string	The system contact reported by the device. This can be set in the UI on the device configuration tab under <b>My Settings\System Contact</b> .
system_location	string	The system location reported by the device. This can be set in the UI on the device configuration tab under <b>My Settings\System Location</b> .

## Connection attributes view (PUBLIC\_CONN\_INFO\_VW)

Attribute name	Data type	Description
device_guid	string	A GUID that serves as a unique identifier for the device.
connection_guid	string	A GUID that serves as a unique identifier for a communication interface.
ip_hostname	string	The IP host name of the network interface.
ipv4_address	string	The version 4 IP address of the network interface.
mac_address	string	The MAC address of the network interface.
discovery_time	datetime	The time at which the most recent discovery of the device occurred.
nic_model_name	string	The model name reported by the network interface.
nic_version	string	The firmware version reported by the network interface.
port_number	int	The port number of the network interface that the device corresponding to device_guid is attached to.

## All attributes view (PUBLIC\_DEV\_CON\_INFO\_VW)

This view is a combination of the PUBLIC\_DEV\_INFO\_VW and the PUBLIC\_CON\_INFO\_VW. See the previous tables for column details.

## Group membership view (PUBLIC\_DEVICE\_GROUP\_VW)

Attribute name	Data type	Description
group_name	varchar(256)	The name of the device group (for example, "Houston" or "Texas").
group_full_name	varchar(max)	The fully qualified device group name; a slash separated string that contains the all of the group's ancestor groups ("USA", "USA/Texas", "USA/Texas/Houston").
group_guid	varchar(36)	A GUID that serves as a unique identifier for the device group.
device_guid	varchar(36)	A GUID that serves as a unique identifier for the device.
connection_guid	varchar(36)	A GUID that serves as a unique identifier for a communication interface.
is_direct_member	int	Describes how the device became a member of its group. "1" if the device referenced by the device_guid and connection_guid is a direct member of the group_name group; "0" if the device is a member of the group because the group_name group is an ancestor of the device's parent group.

## Media charge view (PUBLIC\_MEDIA\_CHARGE\_VW)

Attribute name	Data type	Description
device_guid	varchar(36)	A GUID that serves as a unique identifier for the device.
connection_guid	varchar(36)	A GUID that serves as a unique identifier for a communication interface.
media_size	varchar(64)	A string representation of the media size that is associated with the simplex_charge and duplex_charge values.
simplex_charge	float	The ratio used to calculate the letter or A4 area equivalent for simplex pages (letter, if the media size is in Imperial units; A4, if the media size is in metric units).
duplex_charge	float	The ratio used to calculate the letter or A4 area equivalent for duplex pages (letter, if the media size is in Imperial units; A4, if the media size is in metric units).

## Appendix C—Naming schema

Column Name	Location	Programmatic Name
11x17/A3 Media	All.Capabilities	PaperSize11x17
802.11 b/g/n	All.DetailedInfo.Wireless	Dot11Configuration
802.1X Authentication	All.Security	Dot1xAuthentication
Access Control for Device Functions	All.Security	AccessControlForDeviceFunctions
Acknowledged	All.WebJetadmin	Acknowledged
Active Directory Description	All.WebJetadmin.Discovery	ADDescription
Active Directory Location	All.WebJetadmin.Discovery	ADLocation
Active Directory Name	All.WebJetadmin.Discovery	ADName
Active Directory Path	All.WebJetadmin.Discovery	ADPath
ADF Capacity	All.Capabilities	AdfCapacity
ADF Speed	All.Capabilities	AdfSpeed
Alternative Letterhead Mode	All.Print	PrintAlternativeLetterheadMode
Analog Fax	All.Capabilities,All.Fax	HasFax
AppleTalk	All.Network	AppleTalkProtocolStackEnabled
AppleTalk - Port Description	All.DetailedInfo.Network	EtherTalkPortDescription
AppleTalk - Port Type	All.DetailedInfo.Network	EtherTalkPortType
AppleTalk - Status	All.DetailedInfo.Network	EtherTalkStatus
AppleTalk - Zone	All.DetailedInfo.Network	EtherTalkAppletalkZone
Application Manager Installed	All.Solutions	IsAppMgrInstalled
Applications	All.Solutions	ListApplications
Asset Number	All.DetailedInfo.Device,All.Identity,Favorites	AssetNumber
Authentication - Copy	All.Security	DeviceFunctionCopyAgent
Authentication - Create Stored Job	All.Security	DeviceFunctionCreateStoredJobAgent
Authentication - Future Installation	All.Security	FutureInstallationAgent
Authentication - Home Screen Access	All.Security	HomeScreenAccessAgent
Authentication - HP Digital Send Service Secondary E-Mail	All.Security	DeviceFunctionDSSSecondaryEmailAgent
Authentication - HP Digital Send Service Workflow	All.Security	DeviceFunctionDSSWorkflowAgent
Authentication - Job Storage	All.Security	DeviceFunctionJobStorageAgent
Authentication - Send E-Mail	All.Security	DeviceFunctionSendToEmailAgent
Authentication - Send Fax	All.Fax	DeviceFunctionSendToFaxAgent
Authentication - Send To Folder	All.Security	DeviceFunctionSendToFolderAgent
Auto Cleaning Page	All.Print	AutoCleaningPage
Auto Continue	All.Print	AutoContinue
Auto Include Margins	All.Copier	DefaultCopierAutoIncludeMargins
Auto Sense Mode	All.Print	AutoSenseMode
AutoSend	All.Device	AutoSendSettings
Average Coverage	All.DetailedInfo.Usage	AverageTonerCoverage
Black Average Coverage	All.DetailedInfo.Usage	AverageBlackCoverage
Black Cartridge Low Threshold	All.Supplies	BlackCartridgeLowThreshold
Black Cartridge Very Low Action	All.Supplies	BlackCartridgeVeryLowAction
Bluetooth	All.Capabilities	CapBluetooth
Booklet Maker	All.Capabilities	HasBookMaker
BOOTP Server	All.DetailedInfo.Device,All.Network	IPBootpServer
Browser	All.Device	DeviceBrowserConfig
Calibration Timing	All.Device	CalibrationTiming
Cartridge Low Action	All.Print	TonerLowAction
Cartridge Out Action	All.Print	TonerOutAction
Channel	All.DetailedInfo.Wireless	Dot11Channel
Check ACL for HTTP	All.Security	NetworkACLTableAllowHTTPAccess
Clearable Warnings	All.Device	ClearableWarnings
Cold Reset Media Size	All.Print	ColdResetMediaSize
Collator	All.Capabilities	HasCollator
Collection Time (Accessory Inventory)	All.WebJetadmin.ReportDataCollection.AccessoryInventory	AccessoriesInventoryOffsetSetting
Collection Time (Device Inventory)	All.WebJetadmin.ReportDataCollection.DeviceInventory	DeviceInventoryOffsetSetting
Collection Time (Device Utilization by User)	All.WebJetadmin.ReportDataCollection.DeviceUtilizationByUser	ByUserTrackingOffsetSetting
Collection Time (Device Utilization)	All.WebJetadmin.ReportDataCollection.DeviceUtilization	DeviceUtilizationOffsetSetting
Collection Time (Event Log History)	All.WebJetadmin.ReportDataCollection.EventLogHistory	EventLogHistoryOffsetSetting
Collection Time (Hourly Peak Usage)	All.WebJetadmin.ReportDataCollection.PeakUsage	PeakUsageOffsetSetting
Collection Time (Supply Utilization)	All.WebJetadmin.ReportDataCollection.SupplyUtilization	SupplyUtilizationOffsetSetting

Column Name	Location	Programmatic Name
Collection Time Zone (Accessory Inventory)	All.WebJetadmin.ReportDataCollection.AccessoryInventory	AccessoriesInventoryTimeZoneSetting
Collection Time Zone (Device Inventory)	All.WebJetadmin.ReportDataCollection.DeviceInventory	DeviceInventoryTimeZoneSetting
Collection Time Zone (Device Utilization by User)	All.WebJetadmin.ReportDataCollection.DeviceUtilizationByUser	ByUserTrackingTimeZoneSetting
Collection Time Zone (Device Utilization)	All.WebJetadmin.ReportDataCollection.DeviceUtilization	DeviceUtilizationTimeZoneSetting
Collection Time Zone (Event Log History)	All.WebJetadmin.ReportDataCollection.EventLogHistory	EventLogHistoryTimeZoneSetting
Collection Time Zone (Hourly Peak Usage)	All.WebJetadmin.ReportDataCollection.PeakUsage	PeakUsageTimeZoneSetting
Collection Time Zone (Supply Utilization)	All.WebJetadmin.ReportDataCollection.SupplyUtilization	SupplyUtilizationTimeZoneSetting
Color	All.Capabilities	ColorSupported
Color Access Control	All.Security	CAC
Color Access Control Level	All.Security	ColorAccessControlLevel
Color Cartridge Very Low Action	All.Supplies	ColorCartridgeVeryLowAction
Color Copy Mode With Auto	All.Copier	ColorCopyModeAuto
Color Copy Option	All.Copier	ColorCopyOption
Color Supply Out	All.Print	ColorSupplyOut
Color/Black Mix	All.Print	MonoColorSwitchMode
Company Name	All.DetailedInfo.Device,All.Identity	CompanyName
Contact Person	All.DetailedInfo.Device,All.Identity,Favorites	ContactPerson
Contracted	All.WebJetadmin	DeviceUnderContract
Control Panel	All.Device	ControlPanelDisplay
Control Panel Access	All.Security	ControlPanelAccess
Control Panel Language	All.Device	DeviceControlPanelLanguage
Control Panel Lock Override	All.Security	ControlPanelLockOverride
Copier	All.Capabilities	HasCopier
Copier Fit To Page	All.Copier	CopierFitToPage
Copier Reduce/Enlarge	All.Copier	CopierReduction
Copy - Alternative Letterhead Mode	All.Copier	CopyAlternativeLetterheadMode
Copy Background Cleanup	All.Copier	DefaultCopierBackgroundCleanup
Copy Content Orientation	All.Copier	CopierContentOrientation
Copy Darkness	All.Copier	DefaultCopierDarkness
Copy Heavy Originals	All.Copier	CopierHeavyOriginals
Copy Image Preview	All.Copier	CopierImagePreview
Copy Job Auto Interrupt	All.Copier	DeviceCopierJobAutoInterrupt
Copy Job Build	All.Copier	CopierJobBuild
Copy Job Scan Ahead	All.Copier	DeviceCopierJobScanAhead
Copy Optimize Text/Picture	All.Copier	CopierScanOptimization
Copy Output Bin	All.Copier	DeviceCopierOutputBin
Copy Pages	All.Counters	PPUTotalCopyPageCount
Copy Pages Per Sheet	All.Copier	CopierPagesPerSheet
Copy Paper Tray Selection	All.Copier	CopyPaperSelection
Copy Reduce/Enlarge	All.Copier	CopierReduceEnlarge
Copy Sharpness	All.Copier	DefaultCopierSharpness
Copy Staple	All.Copier	CopierStaple
Courier Font Type	All.Print	CourierFontType
Credentials Required	All.WebJetadmin,Favorites	NeededCreds
Cyan Average Coverage	All.DetailedInfo.Usage	AverageCyanCoverage
Cyan Cartridge Low Threshold	All.Supplies	CyanCartridgeLowThreshold
Data Collection Enabled (Accessory Inventory)	All.WebJetadmin.ReportDataCollection.AccessoryInventory	AccessoriesInventoryEnabled
Data Collection Enabled (Device Inventory)	All.WebJetadmin.ReportDataCollection.DeviceInventory	DeviceInventoryEnabled
Data Collection Enabled (Device Utilization by User)	All.WebJetadmin.ReportDataCollection.DeviceUtilizationByUser	ByUserTrackingEnabled
Data Collection Enabled (Device Utilization)	All.WebJetadmin.ReportDataCollection.DeviceUtilization	DeviceUtilizationEnabled
Data Collection Enabled (Event Log History)	All.WebJetadmin.ReportDataCollection.EventLogHistory	EventLogHistoryEnabled
Data Collection Enabled (Hourly Peak Usage)	All.WebJetadmin.ReportDataCollection.PeakUsage	PeakUsageEnabled
Data Collection Enabled (Supply Utilization)	All.WebJetadmin.ReportDataCollection.SupplyUtilization	SupplyUtilizationEnabled
Datagrams - Incoming	All.DetailedInfo.Network	UdpDatagramsIncoming
Datagrams - Outgoing	All.DetailedInfo.Network	UdpDatagramsOutgoing
Date/Time	All.Device	DateTimeFromDevice
Date/Time Format	All.Device	DeviceDateTimeFormat
Default Copier Copies	All.Copier	DefaultCopierCopies
Default Copy Collation	All.Copier	CopierCollation

Column Name	Location	Programmatic Name
Default Edge-to-Edge Setting	All.Copier	CopierEdgeToEdge
Default Image Quality	All.Copier	CopierQuality
Default Input Paper Tray	All.Print	DefaultPaperTray
Default Media Size	All.Print	DeviceDefaultMediaSize
Default Media Type	All.Print	DefaultMediaType
Default Number of Copies	All.Copier	DeviceCopierQuantity
Default Number of Sides	All.Copier	DeviceCopierDuplexMode
Default Original Content	All.Copier	CopierImageType
Default Original Density	All.Copier	DefaultCopierContrast
Default Original Media Size	All.Copier	DeviceCopierMediaSize
Default Print Density	All.Print	DefaultDensityCombo
Default Printer Copies	All.Copier	DeviceCopies
Delay Calibration at Wake/Power On	All.Print	DelayCalibrationAtPowerOn
Desired USB Mode	All.Network	USBDesiredMode
Device Announcement Agent	All.Security	HDAPAgentConfiguration
Device Certificates	All.Device	DeviceWebBrowserCertificateConfig
Device Firmware Date	All.DetailedInfo.Device,All.Firmware	DeviceFirmwareRomDateCode
Device Firmware Version	All.DetailedInfo.Device,All.Firmware,Favorites	DeviceFirmwareRevision
Device Groups	All.WebJetadmin,Favorites	DeviceGroupMembership
Device Icon	All.Identity,Favorites	DeviceIcon
Device ID String	All.DetailedInfo.Device	BitronicsStringFormatted
Device Location	All.DetailedInfo.Device,All.Identity,Favorites	DeviceLocation
Device Model	All.DetailedInfo.Device,All.Identity,Favorites	DisplayName
Device Name	All.DetailedInfo.Device,All.Identity,Favorites	DeviceName
DHCPv4 FQDN compliance with RFC 4702	All.Network	DHCPv4FQDNCompliance
Digital Fax	All.Capabilities,All.Fax	HasDigitalFax
Digital Send Pages	All.Counters	PageCountDigitalSend
Digital Sending - Accessing the LDAP Server	All.DigitalSend	DSAccessLDAPServer
Digital Sending - Auto Reset Settings	All.DigitalSend	DSTimeOutPreferences
Digital Sending - Email Attachment Settings	All.DigitalSend	DSEmailAttachmentSettings
Digital Sending Service	All.DigitalSend	DSSConfigCombo
Disable Direct Ports	All.Security	DisableDirectConnectPortsV2
Discovery Date/Time	All.WebJetadmin,Discovery	FirstDiscoveryTime
Disk Jobs	All.Print	GetDSMDeviceDiskJobs
Display Color Usage Job Log Page On Information Tab	All.Security	DeviceDisplayColorLog
DLC/LLC	All.Network	LLCProtocolStackEnabled
DNS Server	All.Network	DNSServer
Document Feeder Kit Very Low Action	All.Supplies,Maintenance	DocumentFeederKitVeryLowAction
D-size Media	All.Capabilities	PaperSizeD
DSS Server Address	All.DigitalSend	DigitalSendDSSServerAddress
Duplex Binding	All.Storage	MediaPathDefaultIndex
Duplex Blank Pages	All.Print	DuplexBlankPages
Duplex Impressions	All.Counters	IsDuplexImpressions
Duplexer	All.Capabilities	HasDuplex
Economode	All.Print	EconoMode
Email	All.Capabilities	CapEmail
Email Address Validation	All.DigitalSend	EmailAddressValidation
Email Address/Message Settings	All.DigitalSend	EmailAddressMessageSettings
Email File Settings	All.DigitalSend	EmailFileSettings
Email Notification Settings	All.DigitalSend	EmailNotificationSettings
Email Scan Settings	All.DigitalSend	EmailScanSettings
Embedded Web Server Language Settings	All.EWS	EwsLanguageCombo
Embedded Web Server URL	All.EWS	EWSUrl
Enable Host USB	All.Security	UsbHostEnable
Enable Send To Email	All.DigitalSend	SendToEmailSettingsEnabled
Enable Send to Network Folder	All.DigitalSend	SendToFolderSettingsEnabled
Enable Send To USB	All.DigitalSend	SendToUsbSettingsEnabled
Encrypt all web communication	All.Network	HTTPSSettings
Encryption Strength	All.Security	EncryptionStrength

Column Name	Location	Programmatic Name
Engine Cycle Count	All.Counters, Favorites	PageCount
ePrint Settings	All.Network	EPrintSettings
Error Handling	All.Network	PrinterErrorBehavior
E-size Media	All.Capabilities	PaperSizeE
Event Info Log	All.DetailedInfo.Device, All.Device	EventInfo
EWS	All.EWS	EWSSupported
EWS Information Protection	All.Security	AdminAccessForInfoTab
EWS Password	All.Security	EWSPasswordsSet
EWS Security	All.Security	EWSSecurity
Fax Archiving	All.Fax	FaxArchiving
Fax Forwarding	All.Fax	FaxForwarding
Fax Header Settings	All.Fax	XDMFHeader
Fax Maximum Baud Rate	All.Fax	DSFaxServiceMaxBaudRate
Fax Number	All.Fax	FaxPhoneNumber
Fax Number Confirmation	All.Fax	XDMFNumberConfirmation
Fax Receive Settings	All.Fax	FaxReceiveSettingsSetup
Fax Resolution Quality	All.Fax	FaxResolutionQuality
Fax Send - Dialing Mode	All.Fax	FaxDialMode
Fax Send - Resolution	All.Fax	FaxResolution
Fax Send Settings	All.Fax	FaxSendSettingsSetup
Fax Time Format	All.Fax	FaxTimeFormat
File System External Access	All.Storage	FileSystemExternalAccessCombo
File System Password	All.Storage	FileSystemPasswordsSet
First Collected (Accessory Inventory)	All.WebJetadmin.ReportDataCollection.AccessoryInventory	AccessoriesInventoryFirstCollected
First Collected (Device Inventory)	All.WebJetadmin.ReportDataCollection.DeviceInventory	DeviceInventoryFirstCollected
First Collected (Device Utilization by User)	All.WebJetadmin.ReportDataCollection.DeviceUtilizationByUser	ByUserTrackingFirstCollected
First Collected (Device Utilization)	All.WebJetadmin.ReportDataCollection.DeviceUtilization	DeviceUtilizationFirstCollected
First Collected (Event Log History)	All.WebJetadmin.ReportDataCollection.EventLogHistory	EventLogHistoryFirstCollected
First Collected (Hourly Peak Usage)	All.WebJetadmin.ReportDataCollection.PeakUsage	PeakUsageFirstCollected
First Collected (Supply Utilization)	All.WebJetadmin.ReportDataCollection.SupplyUtilization	SupplyUtilizationFirstCollected
First Copy Speed	All.Copier	FirstCopySpeed
Flash Disk	All.Capabilities, All.Storage	HasDiskFlash
Folder Access Settings	All.DigitalSend	FolderAccessSettings
Fonts and Macros	All.Storage	GetDSMDeviceDiskFontsMacros
Fuser Modes	All.Device	FuserTemperatureMode
GDI	All.Capabilities	CapGdi
Get Community Name	All.Security	GetCommunityNamesSet
Hard Disk	All.Capabilities, All.Storage	HasDisk
Hardware Address (MAC)	All.DetailedInfo.Jetdirect, All.Identity, Favorites	MacAddress
HCO Multi-Bin Mailbox	All.Capabilities	HasMbm
HCO Separator	All.Capabilities	HasSeparator
High Capacity Output Mode	All.Print	HcoMbmOutputMode
Hold Off Print Jobs During Copy	All.Copier	DeviceCopierHoldOffPrintJobs
Hold Off Time	All.Copier	DeviceCopierHoldTime
Home Screen Applications	All.Device	HomeScreenApplications
Home Screen Language Selection	All.Device	HomeScreenLanguageSelection
HP OXP Adapter	All.WebJetadmin	HPOXPAdapterSettings
HP-GL	All.Capabilities	CapGl
HP-GL/2	All.Capabilities	CapGl2
HTTP Idle Timeout	All.Network	HttpIdleTimeout
I/O Device Revision	All.DetailedInfo.Device	IORevision
I/O Timeout to End Print Job	All.Print	IOTimeout
ICMP - Destination Unreachable	All.DetailedInfo.Network	IcmpDestinationUnreachable
ICMP - Incoming Errors	All.DetailedInfo.Network	IcmpErrorsIncoming
ICMP - Incoming Messages	All.DetailedInfo.Network	IcmpMessagesIncoming
ICMP - Outgoing Errors	All.DetailedInfo.Network	IcmpErrorsOutgoing
ICMP - Outgoing Messages	All.DetailedInfo.Network	IcmpMessagesOutgoing
Image Fuser Kit Low Threshold	All.Supplies.Maintenance	ImageFuserKitLowThreshold
Image Fuser Kit Very Low Action	All.Supplies.Maintenance	ImageFuserKitVeryLowAction

Column Name	Location	Programmatic Name
Image Transfer Kit Low Threshold	All.Supplies.Maintenance	ImageTransferKitLowThreshold
Image Transfer Kit Very Low Action	All.Supplies.Maintenance	ImageTransferKitVeryLowAction
Inactivity Timeout	All.Device	InactivityTimeout
Incoming Fax Count	All.Counters	PageCountFaxIncoming
Input Auto Continue	All.Print	InputAutoContinueMode
Input Auto Continue Timeout	All.Print	InputAutoContinueTimeout
Input Tray 1	All.Capabilities	Tray1CapabilityObject
Input Tray 2	All.Capabilities	Tray2CapabilityObject
Input Tray 3	All.Capabilities	Tray3CapabilityObject
Input Tray 4	All.Capabilities	Tray4CapabilityObject
Input Tray 5	All.Capabilities	Tray5CapabilityObject
Input Tray 6	All.Capabilities	Tray6CapabilityObject
Input Tray 7	All.Capabilities	Tray7CapabilityObject
Install Date	All.DetailedInfo.Device,All.Device	FormattedDeviceInstallDate
Instant Lamp On	All.Device	InstantLampOn
Interpreter Languages	All.DetailedInfo.Device,All.Print	InterpreterLanguageList
Interrupt Copy Jobs	All.Copier	DeviceCopierInterruptCopyJobs
Invalid Personality Reports	All.Device	InvalidPersonalityReports
IP Address	All.Identity,All.Network,Favorites	IPv4Address
IP Hostname	All.DetailedInfo.IPv4,All.Identity,Favorites	IPHostname
IP Packets - Incoming	All.DetailedInfo.Network	IPPacketsIncoming
IP Packets - Outgoing	All.DetailedInfo.Network	IPPacketsOutgoing
IPP Printer Install Wizard	All.Network	IPPWizardUrl
IPv4 Information	All.DetailedInfo.IPv4,All.Network	IPv4Info
IPv6 Address List	All.DetailedInfo.IPv6	IPv6Addresses
IPv6 Information	All.Network	IPv6
IPv6 Routes	All.DetailedInfo.IPv6	IPv6Routes
IPX - Ethernet Frame Type	All.Network	IpxFrameType
IPX - Frame Type Token Ring	All.Network	IpxFrameTypeTokenRing
IPX - Queue Server Job Polling Interval	All.Network	IpxJobPollInterval
IPX - RCFG Support Enabled	All.Network	IpxRcrgSupportEnabled
IPX - SAP Broadcast Interval	All.Network	IpxSapBroadcastInterval
IPX - Source Routing	All.Network	IPXSourceRouting
IPX Address	All.DetailedInfo.IPX,All.Network	IpxAddress
IPX Connection Status	All.DetailedInfo.Network	IpxConnectionStatus
IPX Name	All.DetailedInfo.IPX,All.Identity,All.Network	IPXName
IPX/SPX	All.Network	IPXProtocolStackEnabled
Jam Recovery	All.Print	JamRecovery
Jetdirect Firmware - Available	All.Firmware	JetdirectFirmwareAvailable
Jetdirect Firmware - Severity	All.Firmware	JetdirectFirmwareSeverity
Jetdirect Model	All.DetailedInfo.Jetdirect,All.Firmware,All.Network,Favorites	JetDirectModel
Jetdirect Port	All.Network,Favorites	JetDirectExternalPort
Jetdirect Revision	All.DetailedInfo.Jetdirect,All.Firmware,All.Network,Favorites	JetDirectVersion
Job Hold Timeout	All.Print	JobHoldTimeout
Job Retention	All.Print	JobRetention
Job Storage Limit	All.Print	HeldJobSetQueueSize
Job Timeout	All.Network	JobTimeout
Kerberos Authentication	All.Security	DSKerberosAuthentication
Key Press Sound	All.Device	KeyPressSound
Keyboard Layout	All.Device	KeyboardLayout
Last Collected (Accessory Inventory)	All.WebJetadmin.ReportDataCollection.AccessoryInventory	AccessoriesInventoryLastCollected
Last Collected (Device Inventory)	All.WebJetadmin.ReportDataCollection.DeviceInventory	DeviceInventoryLastCollected
Last Collected (Device Utilization by User)	All.WebJetadmin.ReportDataCollection.DeviceUtilizationByUser	ByUserTrackingLastCollected
Last Collected (Device Utilization)	All.WebJetadmin.ReportDataCollection.DeviceUtilization	DeviceUtilizationLastCollected
Last Collected (Event Log History)	All.WebJetadmin.ReportDataCollection.EventLogHistory	EventLogHistoryLastCollected
Last Collected (Hourly Peak Usage)	All.WebJetadmin.ReportDataCollection.PeakUsage	PeakUsageLastCollected
Last Collected (Supply Utilization)	All.WebJetadmin.ReportDataCollection.SupplyUtilization	SupplyUtilizationLastCollected
Last Communication	All.WebJetadmin,Favorites	LastCommunicationTime
Last Discovered	All.WebJetadmin.Discovery	LastDiscoveryTime



Column Name	Location	Programmatic Name
LDAP - Accessing the Server	All.DigitalSend	LDAPAuthenticationAccessLDAPServer
LDAP Database - Device User's Email Address Attribute	All.DigitalSend	LDAPEmailSourceColumn
LDAP Database - Device User's Name Attribute	All.DigitalSend	LDAPDisplayNameSourceColumn
LDAP Database - Entered Name LDAP Attribute	All.DigitalSend	LDAPMatchWithTheInfoColumn
LDAP Database - Search Root	All.DigitalSend	LDAPSearchRootColumn
LDAP Search Method	All.DigitalSend	XDMLDAPQueryMode
LDAP Server	All.DigitalSend	DigitalSendLDAPServerAddress
LDAP Settings	All.DigitalSend	XDMLDAPSettings
LDAP Sign In Setup	All.Security	LDAPSignInSetup
Link Setting	All.Network	NetworkLinkSetting
Link Speed	All.Network	NetworkLinkSpeed
LLMNR (Replaced by Network Enable Features)	Network.NetworkEnableFeatures	NetworkEnableFeaturesLLMNR
Locally Administered Address	All.Network	LAA
Magenta Average Coverage	All.DetailedInfo.Usage	AverageMagentaCoverage
Magenta Cartridge Low Threshold	All.Supplies	MagentaCartridgeLowThreshold
Maintenance Kit - Interval	All.Supplies	MarkersuppliesMaintenanceInterval
Maintenance Kit Low Threshold	All.Supplies.Maintenance	MaintenanceKitLowThreshold
Maintenance Kit Very Low Action	All.Supplies.Maintenance	MaintenanceKitVeryLowAction
Managed Toner	All.Print	ManagedToner
Manually Feed Prompt	All.Print	ManuallyFeedPrompt
mDNS Service Name	All.Network	NetworkMDNS
Media Path Usage - Destination	All.DetailedInfo.Usage	MediaPathDestinationUsage
Media Path Usage - Source	All.DetailedInfo.Usage	MediaPathSourceUsage
Model Number	All.Identity	DeviceModelNumber
Multi-homed	All.Network	MultiHomedPartners
Network Enable Features	All.Network	NetworkEnableFeatures
Network Folder File Settings	All.DigitalSend	FolderFileSettings
Network Folder Notification Settings	All.DigitalSend	FolderNotificationSettings
Network Folder Scan Settings	All.DigitalSend	FolderScanSettings
NIC - Bad Packets Received	All.DetailedInfo.Network	JetDirectBadPacketsReceived
NIC - Broadcast Packets Received	All.DetailedInfo.Network	JetDirectBroadcastPacketsReceived
NIC - Broadcast Packets Transmitted	All.DetailedInfo.Network	JetDirectBroadcastPacketsTransmitted
NIC - Description	All.DetailedInfo.Network	JetDirectDescriptionFormatted
NIC - I/O Ports	All.DetailedInfo.Network	JetDirectIOPort
NIC - I/O Type	All.DetailedInfo.Network	JetDirectIOType
NIC - Media Type	All.DetailedInfo.Network	JetDirectMediaType
NIC - Server Status	All.DetailedInfo.Network	JetDirectServerStatus
NIC - Status	All.DetailedInfo.Network	JetDirectStatus
NIC - Total Packets Received	All.DetailedInfo.Network	TotalPacketsReceived
NIC - Total Packets Transmitted	All.DetailedInfo.Network	TotalPacketsTransmitted
NIC - Transmission Errors	All.DetailedInfo.Network	JetDirectErrorsOut
NIC - Unicast Packets Received	All.DetailedInfo.Network	JetDirectUnicastPacketsReceived
NIC - Unicast Packets Transmitted	All.DetailedInfo.Network	JetDirectUnicastPacketsTransmitted
Open/Print from USB Device	All.Security	USBPrinting
Optimum Speed/Cost	All.Print	SpeedCostSwitchMode
Optimum Speed/Energy Usage	All.Print	OptimumSpeedEnergyUsage
Order Supplies % Level	All.Print	OrderSupplies
Original Orientation	All.Copier	Orientation
Other Links	All.EVVS	OtherLinksInformation
Outgoing Analog Fax Count	All.Counters	PageCountFaxOutgoing
Outgoing Digital Fax Count	All.Counters	PageCountDigitalFaxOutgoing
Outgoing Servers	All.Device	OutgoingServers
Override A4/Letter	All.Print	OverrideA4Letter
XPd	All.Device	XPdEnabled
XPd 1.4 Configuration	All.DigitalSend	SDCConfiguration
XPd Accessory Records	All.Device	XPdAccessoryRecordConfig
XPd Device Functions	All.Device	XPdDeviceFunctions
Page Inserter	All.Capabilities	HasPageInserter
Panorama	All.Capabilities	CapPanorama

Column Name	Location	Programmatic Name
Parallel Handshake	All.Network	ParallelHandshake
Parallel Mode	All.Network	ParallelMode
PC Connected	All.Network	IsPcConnect
PCL	All.Capabilities	CapPCL
PCL Form Length	All.Print	PCLFormLength
PCL/XL	All.Capabilities	CapPCLXL
Personal Contacts Setup	All.DigitalSend	XDMEnablePersonalAddressBooks
Phone Home Privacy Setting	All.Network	PrivacySetting
PJL	All.Capabilities	CapPJL
PJL Password	All.Security	PJLPasswordsSet
Port (Any)	All.Network.Favorites	PortDisplayString
Poster Size Paper	All.Capabilities	PaperSizePoster
PostScript	All.Capabilities	CapPostscript
PPM Black & White	All.Capabilities	PpmMono
PPM Color	All.Capabilities	PpmColor
PRCB C1 Firmware Version	All.DetailedInfo.Device	PRCB_C1_Firmware_Version
PRCB C2 Firmware Version	All.DetailedInfo.Device	PRCB_C2_Firmware_Version
PRCB C3 Firmware Version	All.DetailedInfo.Device	PRCB_C3_Firmware_Version
PRCB C4 Firmware Version	All.DetailedInfo.Device	PRCB_C4_Firmware_Version
PRCB C5 Firmware Version	All.DetailedInfo.Device	PRCB_C5_Firmware_Version
Print Engine Revision	All.DetailedInfo.Device,All.Firmware	PrintEngineRevision
Print Mode Usage	All.DetailedInfo.Usage	PrintModeUsage
Print PDF Errors	All.Print	PrintPDFErrors
Print PS Errors	All.Print	PrintPSErrors
Print Sheet Counters	All.Counters	PrintSheetUsage
Print Usage Counters	All.Counters	PrintUsage
Printed Media Info Black Only	All.DetailedInfo.Usage	PrintedMediaInfoBlackOnly
Printed Media Info General Office	All.DetailedInfo.Usage	PrintedMediaInfoGeneralOffice
Printed Media Info General Office Accent	All.DetailedInfo.Usage	PrintedMediaInfoGeneralOfficeAccent
Printed Media Info Professional	All.DetailedInfo.Usage	PrintedMediaInfoProfessional
Printed Media Info Professional Accent	All.DetailedInfo.Usage	PrintedMediaInfoProfessionalAccent
Printer Firmware - Available	All.Firmware	PrinterFirmwareAvailable
Printer Firmware - Severity	All.Firmware	PrinterFirmwareSeverity
Printer Firmware Update	All.Security	RemoteUpgradeEnable
Printer Wakeup	All.Device	PrinterWakeupSet
Projector - Current Source	All.DetailedInfo.Projector	ProjectorCurrentSource
Proxy Server	All.Network	DeviceProxyConfig
PS Defer Media	All.Device	PSDeferMedia
Punch Kit	All.Capabilities	HasPunchKit
Quiet Mode	All.Print	QuietMode
Replace Supplies	All.Supplies	ReplaceSupplies
Replicate MFP	All.DigitalSend	ReplicateMFP
Reset Copy Send Timeout	All.DigitalSend	DeviceCopierResetSendTimeout
Reset Copy Timeout	All.Copier	DeviceCopierResetTimeout
Resident Fonts	All.Storage	GetDSMDeviceResidentFonts
Resolution	All.Print	Resolution
Resolution Enhancement	All.Print	ResolutionEnhancement
Restrict Color	All.Security	RestrictColor
Rotate Offset	All.Print	RotateOffset
Scan Idle Timeout	All.Network	ScanIdleTimeout
Scan Path Usage	All.DetailedInfo.Usage	ScanPathUsage
Scan Usage Counters	All.Counters,All.DetailedInfo.Device	ScanUsage
Scanner	All.Capabilities	HasScanner
Scanner Description	All.DetailedInfo.Scanner	ScannerDescription
Scanner Firmware Date	All.DetailedInfo.Scanner	ScannerFirmwareDate
Scanner Firmware Version	All.DetailedInfo.Scanner	ScannerFirmwareVersion
Scanner Guest	All.DetailedInfo.Scanner	ScannerGuest
Scanner Language	All.DetailedInfo.Scanner	ScannerLanguage
Scanner Media Size	All.DetailedInfo.Scanner	ScannerDefaultPaperSize

Column Name	Location	Programmatic Name
Secure Disk Encryption Mode	All.Storage	SecureDiskAutolock
Secure File Erase Mode	All.Storage	SecureFileEraseMode
Send To Network Folder	All.DigitalSend	SendToNetworkFolderColumn
Serial Number	All.DetailedInfo.Device,All.Identity,Favorites	SerialNumber
Server Collection Time (Accessory Inventory)	All.WebJetadmin.ReportDataCollection.AccessoryInventory	AccessoriesInventoryCollectTime
Server Collection Time (Device Inventory)	All.WebJetadmin.ReportDataCollection.DeviceInventory	DeviceInventoryCollectTime
Server Collection Time (Device Utilization by User)	All.WebJetadmin.ReportDataCollection.DeviceUtilizationByUser	ByUserTrackingCollectTime
Server Collection Time (Device Utilization)	All.WebJetadmin.ReportDataCollection.DeviceUtilization	DeviceUtilizationCollectTime
Server Collection Time (Event Log History)	All.WebJetadmin.ReportDataCollection.EventLogHistory	EventLogHistoryCollectTime
Server Collection Time (Hourly Peak Usage)	All.WebJetadmin.ReportDataCollection.PeakUsage	PeakUsageCollectTime
Server Collection Time (Supply Utilization)	All.WebJetadmin.ReportDataCollection.SupplyUtilization	SupplyUtilizationCollectTime
Set Community Name	All.Security	SetCommunityNamesSet
Severity	All.Status,Favorites	DeviceStatusSeverity
Show Date and Time	All.Device	ShowDateAndTime
Show Network Address	All.Device	NetworkAddressButton
Simple Power Management for One Watt	All.Device	OneWattSimplePowerManagement
Size / Type Prompt	All.Device	SizeTypePrompt
Sleep /Wake Time	All.Device	SleepWakeUpSchedule
Sleep Delay	All.Capabilities	CapPowerSave
Sleep Delay (Minutes)	All.Device	SleepDelay
Sleep Schedule	All.Device	SleepSchedule
SNMP Packets - Incoming	All.DetailedInfo.Network	SnmppacketsIncoming
SNMP Packets - Outgoing	All.DetailedInfo.Network	SnmppacketsOutgoing
SNMP Trap Destination Table	All.Network	TrapTable
Solution Manager Installed	All.Solutions	IsSolMgrInstalled
Solutions	All.Solutions	ListSolutions
Solutions Config Detailed Status	All.Solutions	SolutionsConfigDetailedStatus
Solutions Config Status	All.Solutions	SolutionsConfigStatus
Solutions Configuration Parameter Detailed Status	All.Solutions	SolutionsConfigParamDetailedStatus
Solutions Configuration Parameter Status	All.Solutions	SolutionsConfigParamStatus
Solutions Install Detailed Status	All.Solutions	SolutionsInstallDetailedStatus
Solutions Install Status	All.Solutions	SolutionsInstallStatus
Solutions License Detailed Status	All.Solutions	SolutionsLicenseDetailedStatus
Solutions License Parameter Detailed Status	All.Solutions	SolutionsLicenseParamDetailedStatus
Solutions License Parameter Status	All.Solutions	SolutionsLicenseParamStatus
Solutions License Status	All.Solutions	SolutionsLicenseStatus
Solutions Run Detailed Status	All.Solutions	SolutionsRunDetailedStatus
Solutions Run Status	All.Solutions	SolutionsRunStatus
SRGB	All.Capabilities	CapSRGB
Stacker	All.Capabilities	HasStacker
Stacker Staple Setting	All.Print	StackerStaplerMode
Stand by Fuser Mode	All.Print	StandByFuserMode
Stapler Offset Mode	All.Print	StaplerOffsetMode
Stapler/Stacker	All.Capabilities	HasStapler
Staples Out Override	All.Print	StaplesOutMode
Status	All.DetailedInfo.Device,All.Status,Favorites	DeviceStatus
Status (Accessory Inventory)	All.WebJetadmin.ReportDataCollection.AccessoryInventory	AccessoriesInventoryStatus
Status (Device Inventory)	All.WebJetadmin.ReportDataCollection.DeviceInventory	DeviceInventoryStatus
Status (Device Utilization by User)	All.WebJetadmin.ReportDataCollection.DeviceUtilizationByUser	ByUserTrackingStatus
Status (Device Utilization)	All.WebJetadmin.ReportDataCollection.DeviceUtilization	DeviceUtilizationStatus
Status (Event Log History)	All.WebJetadmin.ReportDataCollection.EventLogHistory	EventLogHistoryStatus
Status (Hourly Peak Usage)	All.WebJetadmin.ReportDataCollection.PeakUsage	PeakUsageStatus
Status (Supply Utilization)	All.WebJetadmin.ReportDataCollection.SupplyUtilization	SupplyUtilizationStatus
Storage Media	All.Storage	GetDSMDeviceStorageMedia
Stored Job Sort Order	All.Print	StoredJobSortOrder
Supplies	All.Supplies	Supplies
Supplies Status Messages on Control Panel	All.Device	ControlPanelSuppliesStatusMessage
Supply Levels Gauge	All.Device	SupplyLevelsGaugeOnCP
Support Contact	All.Network	SupportContact

Column Name	Location	Programmatic Name
Support Phone Number	All.Network	SupportPhoneNumber
Suppress Blank Pages	All.Print	SuppressBlankPages
System Contact	All.DetailedInfo.Device,All.Network,Favorites	SystemContact
System Location	All.Network,Favorites	SystemLocation
System Log Facility	All.DetailedInfo.Network	IPSyslogFacility
System Log Server Info	All.DetailedInfo.IPv4,All.Network	SystemLogServerInfo
System Name	All.DetailedInfo.IPv4,All.Network	SystemName
System Setup Ram Disk	All.Storage	SystemSetupRamDisk
System Up Time	All.DetailedInfo.Jetdirect,All.Network	SystemUpTime
TCP Idle Timeout	All.DetailedInfo.IPv4,All.Network	TcpIdleTimeout
TCP Segments - Incoming	All.DetailedInfo.Network	TcpSegmentsIncoming
TCP Segments - Outgoing	All.DetailedInfo.Network	TcpSegmentsOutgoing
TCP/IP Configuration Method	All.DetailedInfo.IPv4,All.Network	DeviceNCPConfigSource
TCP/IP Domain Suffix	All.Network	DomainSuffix
TCP/IP Protocol	All.Network	TcpProtocolStackEnabled
TFTP Config File (Replaced by Network Enable Features)	Network.NetworkEnableFeatures	NetworkEnableFeaturesTFTPConfigFile
Time Services	All.EVWS	EwsTimeServiceCombo
Time Zone/Daylight Saving	All.Device	TimeZoneDaylightSaving
Toner Collection Unit Very Full Action	All.Supplies.Maintenance	TonerCollectionUnitVeryFullAction
Total Memory	All.Capabilities	RamTotal
Tray 1 Mode	All.Print	ManualFeed
Tray Size	Supplies.Trays	TraySize
Tray Type	Supplies.Trays	TrayType
Trays	All.Supplies	Trays
Trimmer	All.Capabilities	HasTrimmer
Unique	All.Web.Jetadmin	DeviceHashCodelsUnique
Usage Instructions	All.DetailedInfo.Usage	UsageInstructions
USB	All.Capabilities	HasUsb
USB File Settings	All.DigitalSend	UsbFileSettings
USB Keyboard	All.Capabilities	HasUsbKeyboard
USB Notification Settings	All.DigitalSend	UsbNotificationSettings
USB Scan Settings	All.DigitalSend	UsbScanSettings
Use Another Tray	All.Print	UseAnotherTray
Use Requested Tray	All.Print	UseRequestedTray
User PIN Authentication	All.Security	UserPinAuthentication
Web Services Print	All.Network	WebServicesPrint
Windows Sign In Setup	All.Security	XDMW/WindowsSignInSetup
WINS Server	All.Network	WINSServer
WINS Port	Network.NetworkEnableFeatures	NetworkEnableFeaturesWINSPort
WINS Registration (Replaced by Network Enable Features)	Network.NetworkEnableFeatures	NetworkEnableFeaturesWINSRegistration
Wireless - BSSID	All.DetailedInfo.Wireless	Dot11BSSID
Wireless - Regulatory Domain	All.DetailedInfo.Wireless	Dot11RegulatoryDomain
Wireless - Signal Strength	All.DetailedInfo.Wireless	Dot11SignalStrength
Wireless Card	All.Capabilities	HasWireless
Yellow Average Coverage	All.DetailedInfo.Usage	AverageYellowCoverage
Yellow Cartridge Low Threshold	All.Supplies	YellowCartridgeLowThreshold

[hp.com/go/getconnected](https://hp.com/go/getconnected)

Current HP driver, support, and security alerts  
delivered directly to your desktop

© Copyright 2023 HP Development Company, L.P. The information contained herein is subject to change without notice. The only warranties for HP products and services are set forth in the express warranty statements accompanying such products and services. Nothing herein should be construed as constituting an additional warranty. HP shall not be liable for technical or editorial errors or omissions contained herein

pdf\_6803028\_en-US-1\_Rev10, July 2023

