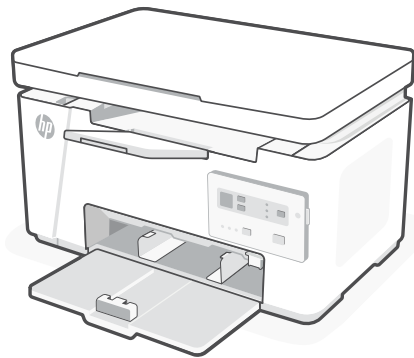




Setup Guide



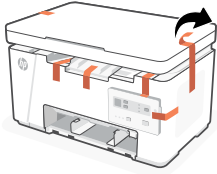
HP LaserJet Pro

MFP M126a plus

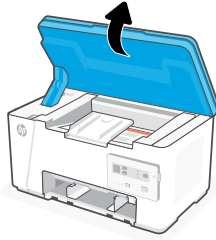


Printer Setup

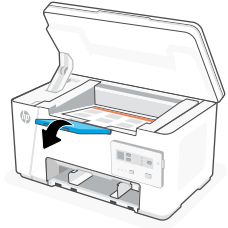
1



Remove the orange tape from the printer.



Lift the scanner assembly.

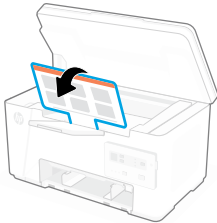


Open the output tray extender.

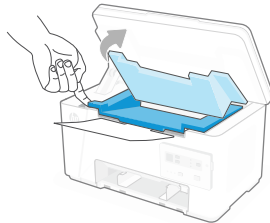
2



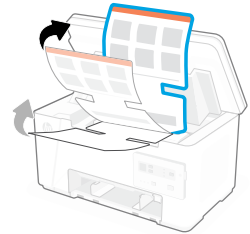
Caution: Do not pull the instruction sheet from the printer before removing the toner cartridge.



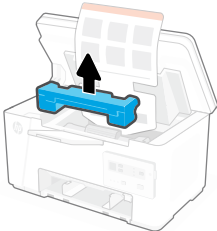
Flip the instruction sheet down (**do not remove it yet**).



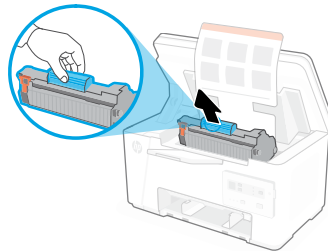
Open the toner door.



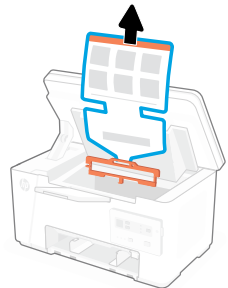
Lift and hold up the instruction sheet (**do not remove it yet**).



Remove the foam.

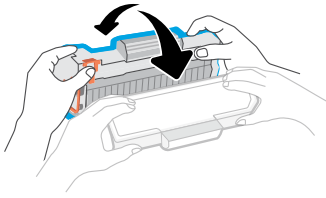


Remove the toner cartridge.

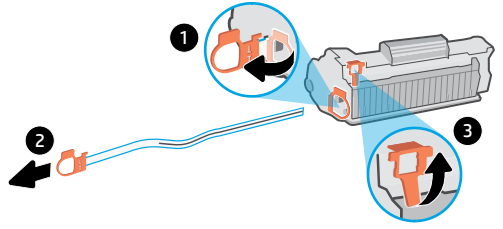


Remove the instruction sheet and attached orange plastic.

3

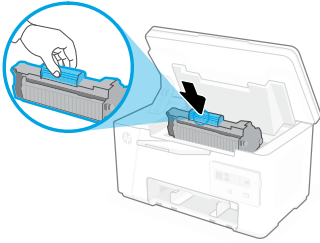


Shake the cartridge (5 - 6 times) to distribute the toner evenly.

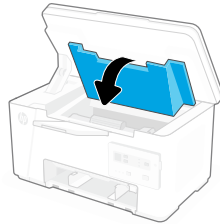


1. Flip open the pull tab on the end of the cartridge.
2. Use the pull tab to remove the protective film from the cartridge.
3. Remove the orange guard on top of the cartridge.

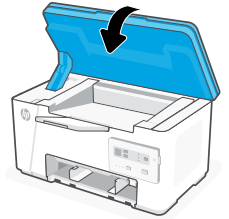
4



Reinsert the cartridge.

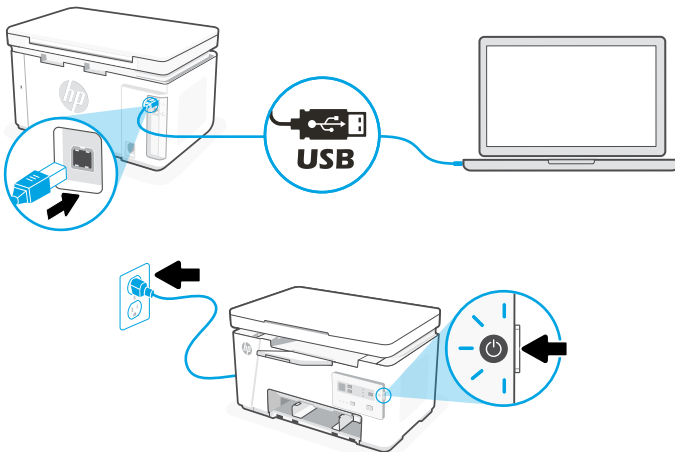


Close the toner door.



Close the scanner assembly.

5

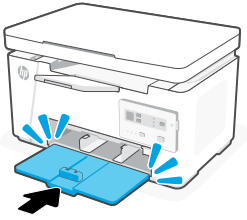


Connect the printer to a computer using a USB cable. Plug in and turn on the printer.

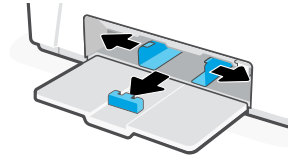


See the **Reference Guide** section for USB connection and troubleshooting tips.

6

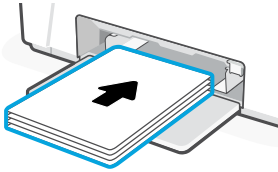


Insert the paper tray until it clicks.

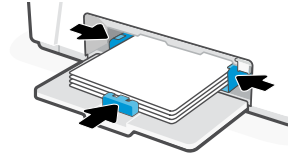


Slide out the guides.

7



Load the paper.



Adjust the guides.

8



123.hp.com

Install the HP printer software from 123.hp.com

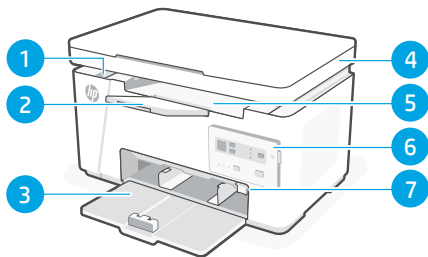


Need more help with setup?
hp.com/support/printer-setup

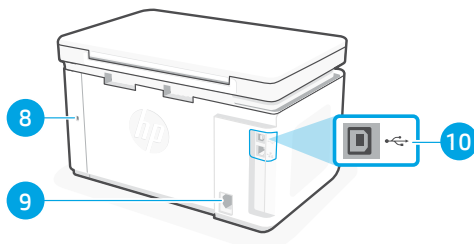


Reference Guide

Printer features

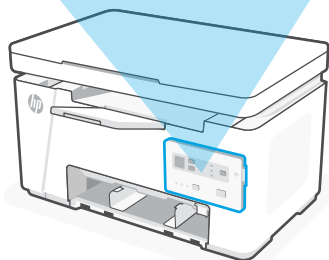
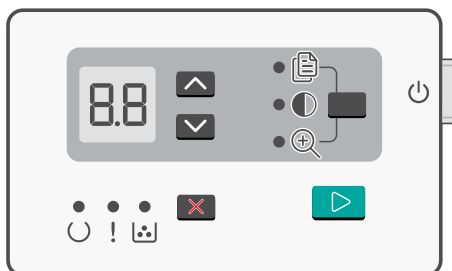


- 1 Cartridge access
- 2 Output tray extender
- 3 Input tray
- 4 Scanner assembly
- 5 Output tray
- 6 Control panel
- 7 Small paper adapter



- 8 Optional cable security lock
- 9 Power cord port
- 10 USB port

Control panel

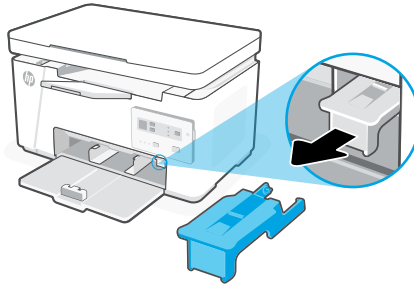


- LED screen
- Up/Down button
- Number of Copies light
- Darker/Lighter Copy light
- Reduce/Enlarge Copy light
- Select button
- Power button
- Ready light
- Attention light
- Toner Alert light
- Cancel button
- Start Copy button

See error code page for more information.

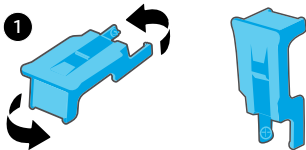
Adjust tray for small paper sizes

- 1** To print on paper shorter than 185 mm (7.28 in), install the adapter on the paper guide.

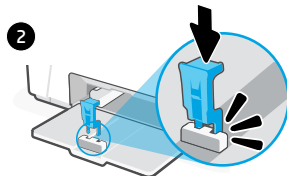


Remove the adapter from the storage slot on the right side of the paper input area.

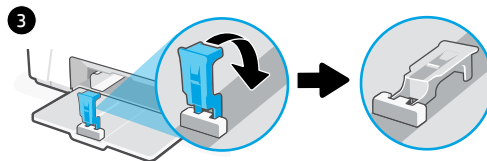
2



- 1.** Position the adapter so the plastic prongs are facing toward you and pointing down.

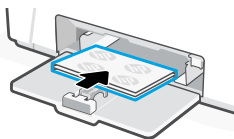


- 2.** Push the adapter onto the paper guide until you hear a click.

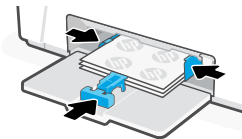


- 3.** Flip the adapter down.

3



Load the paper.

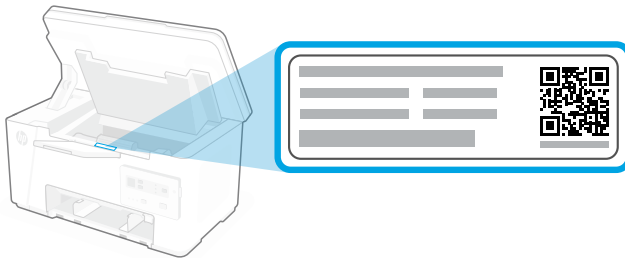


Adjust the guides.

Printer error codes

Code	Description	Solution
E0	Paper is jammed	Clear the jam.
E1	Input tray is empty	Load paper.
E2	Cartridge door is open	Verify the printer cartridge door is closed fully.
H1	Printing on both sides manually	Load the pages into the input tray to print the second side. Press Start Copy button to continue.
E3	Cartridge needs attention	Install the print cartridge / check if the HP original cartridge is installed correctly.
E4	Toner cartridge is very low	Press Start Copy button to continue or replace the toner cartridge.

Locate printer PIN



If prompted to enter a printer PIN during or after setup, find the PIN on the ID label inside the cartridge access area.

USB and connectivity help

If the HP software is unable to find the printer, try the following to resolve the issue.

Try this first:

- Remove and reconnect the USB cable.

If the problem persists, try these steps:

1. If you have already connected your printer with a USB cable to your computer, disconnect it.
2. Remove the printer from your Windows PC.
 - Search for and open **Printers & scanners**.
 - Select the name of your printer from the list.
 - Select **Remove** and then restart your computer.
3. Rerun the HP printer software from **123.hp.com** and follow the instructions.

If the problem still persists, then try these steps:

1. Go to **Device Manager**. Under **Universal Serial Bus controllers**, right-click **USB root hub** and select **Update driver**.
2. Make sure the computer operating system is current. If an update is available, install the latest version.
 - If your update preference is turned off, turn on computer updates.
 - An older version of the operating system may take longer to install drivers.
 - You may need to restart the computer after the update.
3. After the update, rerun the HP printer software from **123.hp.com** and follow the instructions.



Help and Support

For printer information, troubleshooting, and videos, visit the printer support website. Enter your model name to find the printer.



hp.com/support

The information contained herein is subject to change without notice.

Microsoft is a registered trademark of Microsoft Corporation in the United States and/or other countries. All third party trademarks are the property of their respective owners.

Printed in [XXXXX]

